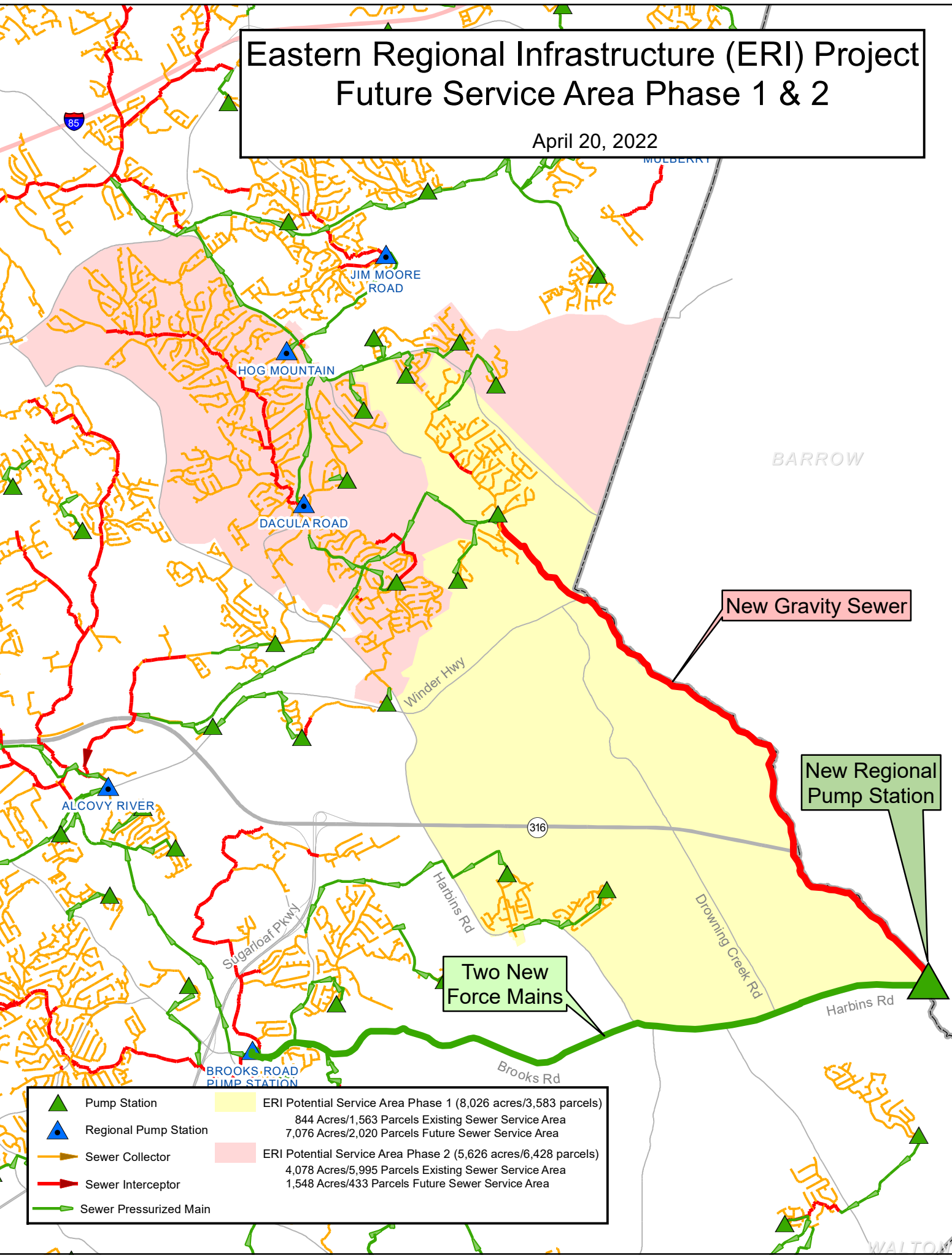


Eastern Regional Infrastructure (ERI) Project Future Service Area Phase 1 & 2

April 20, 2022



New Gravity Sewer

New Regional Pump Station

Two New Force Mains

	Pump Station		ERI Potential Service Area Phase 1 (8,026 acres/3,583 parcels) 844 Acres/1,563 Parcels Existing Sewer Service Area 7,076 Acres/2,020 Parcels Future Sewer Service Area
	Regional Pump Station		ERI Potential Service Area Phase 2 (5,626 acres/6,428 parcels) 4,078 Acres/5,995 Parcels Existing Sewer Service Area 1,548 Acres/433 Parcels Future Sewer Service Area
	Sewer Collector		
	Sewer Interceptor		
	Sewer Pressurized Main		